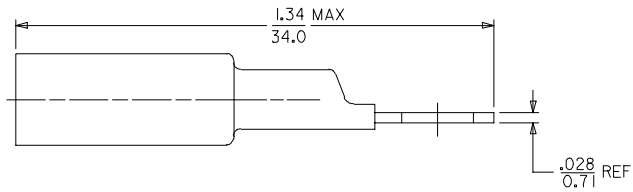
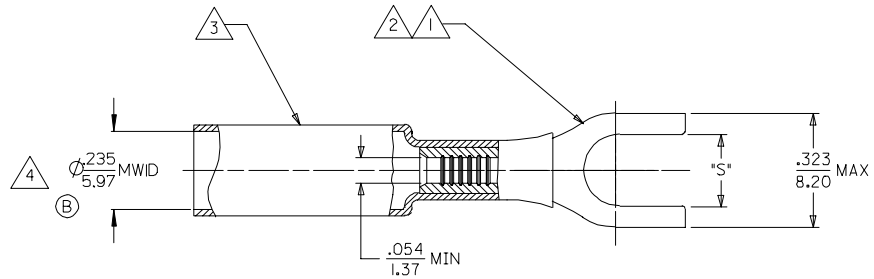


MATERIAL NUMBER	ENGINEERING NUMBER	STUD SIZE	SLOT 'S' ±0.10 ±0.25
191640006	SA-235-06	#6	Ø.146/3.71
191640007	SA-235-08	#8	Ø.173/4.39
191640008	SA-235-10	#10	Ø.198/5.03



NOTES:

- 1. TERMINAL MATERIAL: COPPER ALLOY
- 2. FINISH: ELECTRO TIN PLATE.
- 3. INSULATION MATERIAL: HEAT SHRINKABLE TUBING WITH HOTMELT ADHESIVE INNER LINER. COLOR: RED.
- 4. MWID = MAXIMUM WIRE INSULATION DIAMETER.

SALES DRAWING

CHANGED MWID EC NO: ETC2006-0154 DRAWN BY: ASAYDEH CHKD: JLOMASTRO APPR: JPAWLICK	DESCRIPTION 2005/12/21 2005/12/21 2005/12/21	QUALITY SYMBOLS ▽=0 ▽=0	GENERAL TOLERANCES (UNLESS SPECIFIED)		DIMENSION STYLE	SCALE	DESIGN UNITS	THIRD ANGLE PROJECTION
			mm	INCH	IN/MM	---	INCH	☉
DRAFT WHERE APPLICABLE MUST REMAIN WITHIN DIMENSIONS			4 PLACES	± --- ± ---	DRAWN BY	DATE	SPADE TERMINAL NIAC 22-18 AWG <b>molex</b> MOLEX INCORPORATED DOCUMENT NO. SD-19164-025 SHEET NO. 1 OF 1	
			3 PLACES	± --- ± ---	CHECKED BY	DATE		
			2 PLACES	± --- ± ---	JLOMASTRO	05/12/13		
			1 PLACE	± --- ± ---	APPROVED BY	DATE		
			ANGULAR	± --- °	RDEROSS	05/12/13		